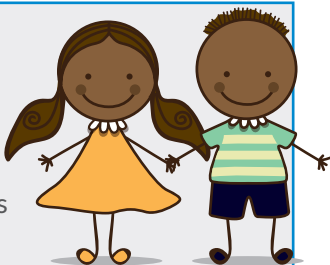


FAQ'S CONTINUED

What should I/we expect?

For you to feel free to contribute your views into this assessment and process and for your voice to have been heard.



You can speak with the Early Support Coordinator if you need support. All professionals will work closely with you and your family to ensure that the right support is put in place.

What happens if the Early Support Pathway is not the right approach for my child?

Both the family and the person who has referred the child will be informed in writing by the Early Support Coordinator. They will also advise you of any other support that may be available.



Will it be the same lead professional throughout the process?

We aim for consistency, however the lead professional may change. This could be for a variety of reasons for example a changing job role or long term sickness, because you have requested a change or because your child starts at an early years setting.

What if I'm not happy?

Please feel free to get in touch with the Early Support Coordinator who will be happy to assist in any way they can.



Contact details can be found on the back of this leaflet.

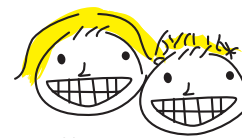
Confidentiality

Generally the information which you and your child provide will only be shared with consent.



However, there may be certainty times when the people working with you will need to share information, for example:

- When they need to find out urgently if a child is at risk of harm.
- To help a child who is at risk of harm.
- When an adult is at risk of harm or to help prevent or detect a serious crime.



Early Support Pathway

PETERBOROUGH
CITY COUNCIL



Early Support Pathway A Guide for Parents & Carers

Who do I contact?

Early Support Coordinator

Contact us at : Early Years
and Childcare Service

Peterborough City Council
Sand Martin House,
Bittern Way, Fletton Quays,
Peterborough, PE2 8TY

Call 01733 317411



CPFT*
Cambridgeshire and Peterborough
NHS Foundation Trust

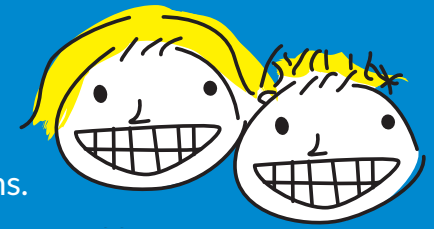
Early Support
for children, young people and families





What is the Early Support Pathway?

Early Support in Peterborough is based on a national programme following the SEND reforms. It aims to support pre-school children and families in a more holistic approach.



Who is it for?

It's for pre-school children with complex / health / education or care needs



How can I be referred?

A referral can only be made by a professional body for example:

- Your Health Visitor
- Early Years
- Community Nursery Nurse

This is because these professionals see your child regularly and have more contact with them.

They are able to provide a developmental or health profile of your child as they know them well This can only be done with the consent of the parent / carer.

What are the benefits of using the pathway?

The Early Support Pathway is a more holistic approach for families as the family is at the centre of a coordinated approach using joint working between the services needed.

What happens when a referral has been made?

The referral goes to the Early Help Team within Peterborough City Council where it will be looked at and checked for quality and safeguarding. After this it will then be forwarded to the Early Support Coordinator.



Once it is forwarded to the Early Support Coordinator what happens to it?

The Early Support Coordinator will look at all information and then it will be allocated to an Early Support Multi-Agency meeting.

What happens at the Early Support Multi-Agency meeting and who will be there?

At the meeting the information that has been provided will be discussed by a group of professionals from across health and education. There will also be an opportunity for the referrer to attend the meeting and be part of discussion.

This meeting is chaired by the Early Support Co-ordinator.

From the information provided and the discussion held, the group will decide if the Early Support Pathway is the appropriate pathway for your child.

If it is felt that this is the most appropriate pathway for your child a plan will be put in place, which will be based around their individual needs. This could range from, an appointment with the Community Paediatrician, a referral to other health professionals, or other forms of support that would be of most help.

FAQ'S

Why do we now refer through to the Early Support Pathway rather than direct to the Community Paediatrician?

This is to ensure that a robust assessment of the child and family's needs are made. The assessment gives the Community Paediatrician a great deal of information about your child and helps to identify the appropriate support that is needed.

Is there a timeframe ?

We aim to hold the Multi-Agency Early Support meeting as quickly as possible, hopefully within 6 to 8 weeks of The Early Support Co-ordinator receiving the referral. *Continued overleaf*

